

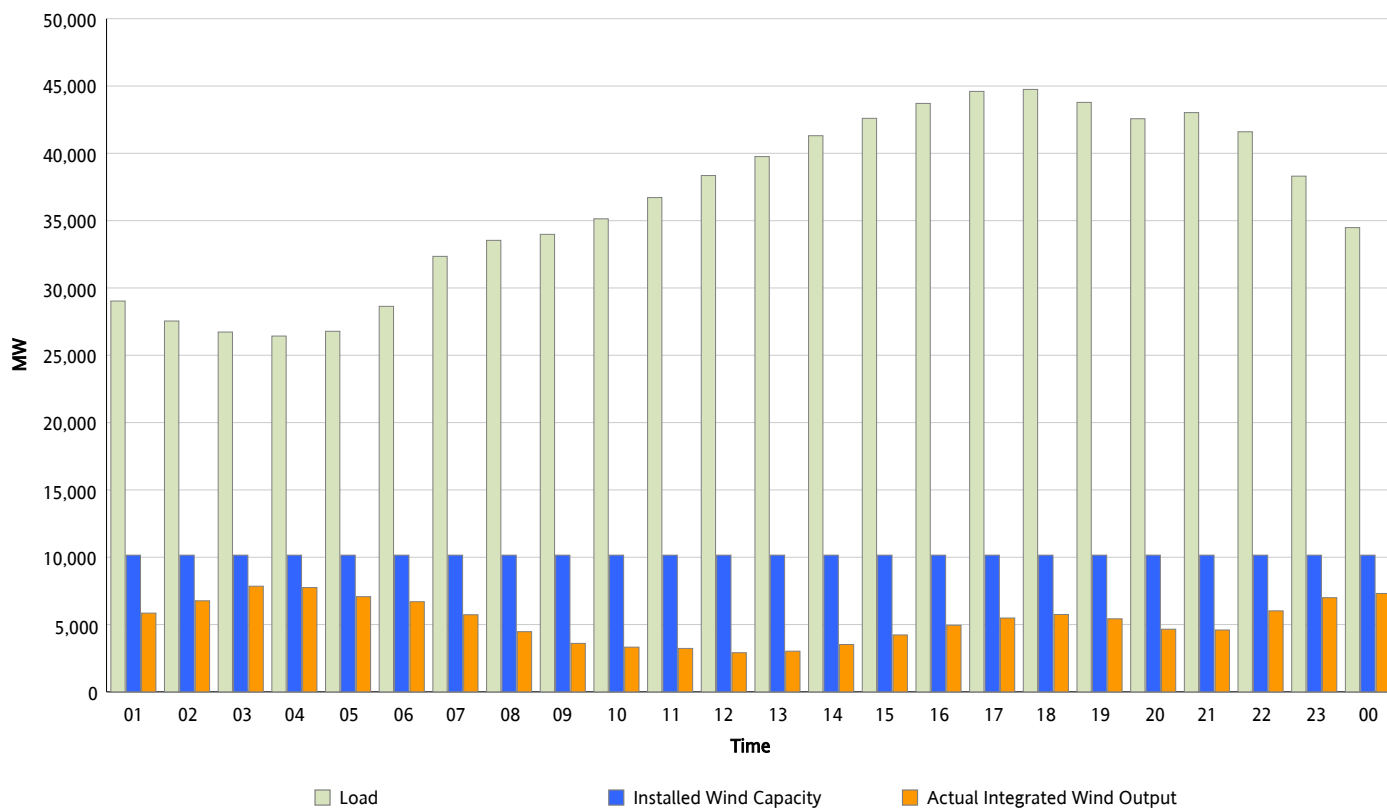


ERCOT Grid Operations

Wind Integration Report : 04/15/2013

Peak Load	44,748 MW
Load Peak Hour (HE)	18
Wind Over Peak	5,746 MW
Wind Record 02/09/13	9,481 MW
Max Wind Value*	7,999 MW
Wind Peak Time	02:30
Wind Integration %	29.87 %

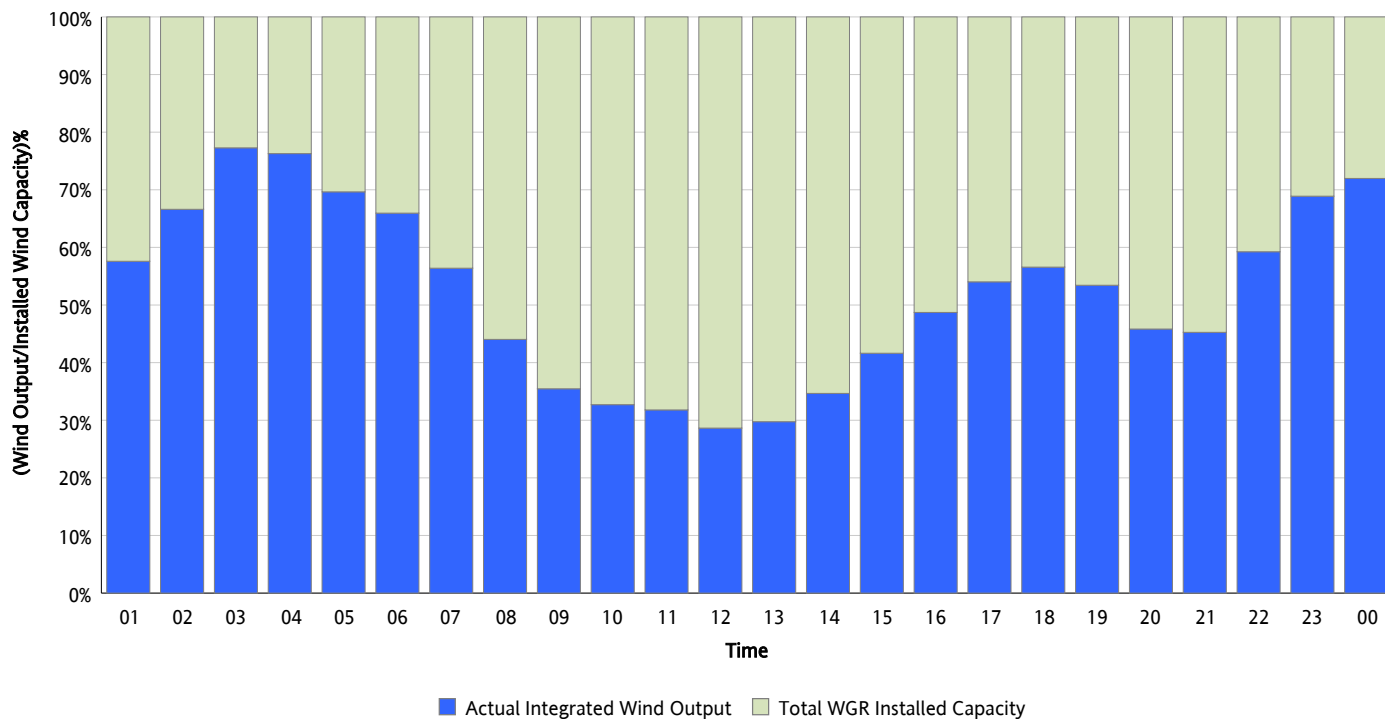
Hourly Average Actual Load vs. Actual Wind Output
04/15/2013



* Wind Record and Wind Max represent instantaneous values and the rest of the values are integrated over the hour

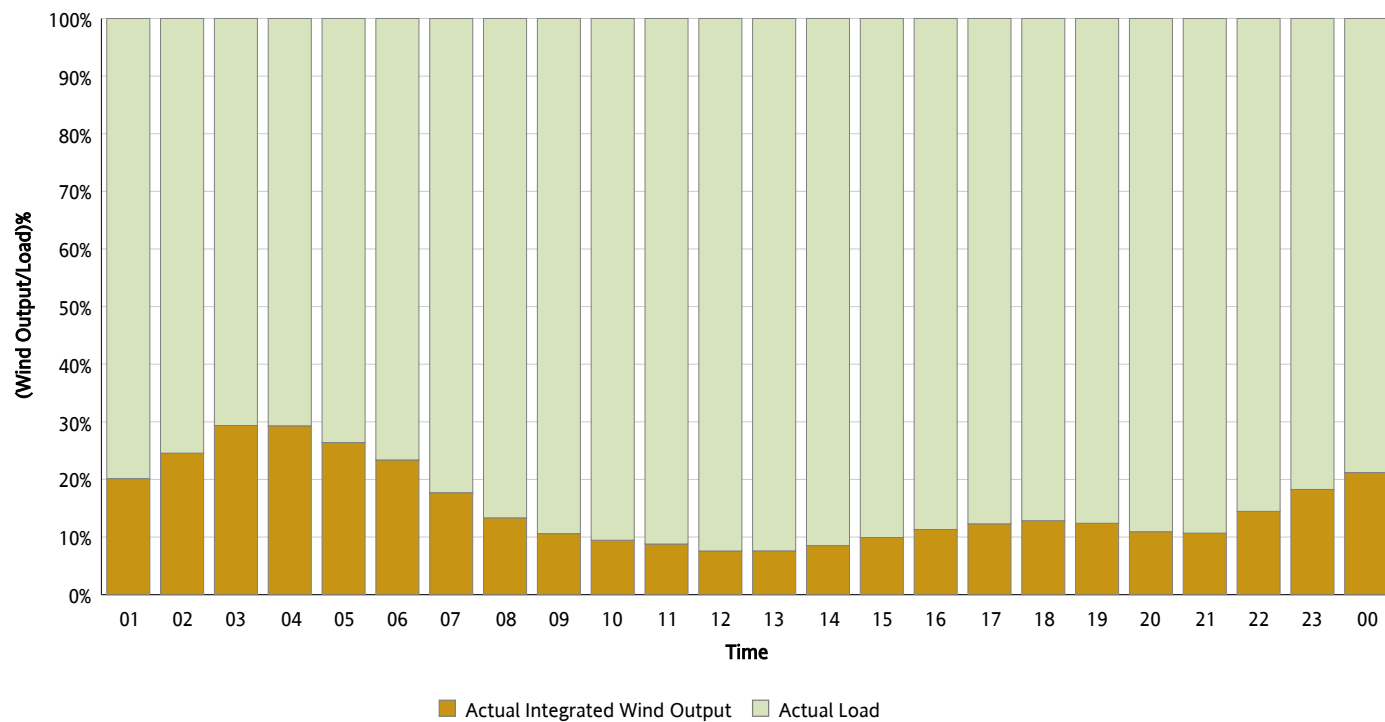
Actual Wind Output as a Percentage of the Total Installed Wind Capacity

04/15/2013



Actual Wind Output as a Percentage of the ERCOT Load

04/15/2013



ERCOT Load vs. Actual Wind Output

04/08/2013 - 04/15/2013

